

PLAYBILL

THE WARRIOR THEATER COMPANY PRESENTS
A HIGH SCHOOL PRODUCTION OF



Thursday, November 13 at 7pm
Friday, November 14 at 7pm
Saturday, November 15 at 3pm & 7pm

Cornerstone Church Praise Center

"CCS Fine Arts...Performing for the Glory of God"

**The Warrior Theater Company Presents
A High School Production of**



**By
TODD WALLINGER**

**Thursday, November 13 at 7pm
Friday, November 14 at 7pm
Saturday, November 15 at 3pm & 7pm**

Cornerstone Church Praise Center

The Enchanted Bookshop

Is presented through special arrangement
with Pioneer Drama Service.

All authorized performance materials are also
supplied by Pioneer Drama Service.

www.pioneerdrama.com

The mission of the Cornerstone Christian Schools Fine Arts
Department is to develop and train the God-ordained artistic
talent of CCS students with unprecedented excellence to be given
back to God as an offering of praise.

***"For of Him, and through Him, and to Him are all things;
to Him be the glory forever, amen."
Romans 11:36***

Setting

Time: The Present

Place: “A Likely Story” used book shop

Scenes

Act 1

Scene One: One evening near closing time

Scene Two: That night

Scene Three: The next day

Scene Four: That night

Scene Five: The next day

Act 2

Scene One: One evening near closing time

Scene Two: That night

Scene Three: The next day

Scene Four: That night

Scene Five: The next day

Synopsis

During the day, A Likely Story may look like any other used bookstore.

But at night, it's a place where magic happens.

That's when the characters inside the books come alive.

Six of those characters — Dorothy Gale, Robin Hood, Pollyanna, Sherlock Holmes, Heidi, and Tom Sawyer — long to help Margie, the scatterbrained owner, save her struggling store. But they're not allowed to leave the building or be seen by human eyes. So when a pair of smugglers comes looking for a stolen necklace hidden inside one of the books, the characters are torn. Should they warn Margie and risk disappearing forever? Or can they find a way to defeat the crooks without being seen?

Any video and/or audio recording of this production is strictly prohibited.

CAST (in order of appearance)

Margie	Evie Pflug
Bombalurina	River Saucedo
Mom	Lauren Quintana
Timmy (11/13)	Lillian Garcia
Timmy (11/14-15)	Josiah Garza
Robin Hood	Israel Chapman
Tom Sawyer (11/13)	Josiah Garza
Tom Sawyer (11/14-15)	Mason Novogradac
Sherlock Holmes	Brady Campbell
Dorothy	Mikayla Lujan
Heidi	Megan Rohlmeier
Pollyanna	Audrey Ramos
Book Fairy	Emmalee Barnes
Lady in Red	Annaliese Nichols
Fagin	Aaron Armstrong
Long John Silver	Raegan Dadfar
Officer Ketchum	Emmanuel Sanchez
Fingers	Andrew Puente
Eddie	Jordan Japhet
Doctor Dolittle	Noah Padilla
Queen of Hearts	Nina Merritt
Frankenstein	Aaron Armstrong
Wicked Witch of the West	Arianna Smith
Hopalong Cassidy	Maryn Villarreal

CREW/SWINGS

Grayson Boskowski

Grayson Graham

Aranza Carbonell

Ethan Maldonado

Lillian Garcia

Marissa Minneci

Ridleigh Gould

WHO'S WHO IN THE CAST



EVIE PFLUG (Margie) is a Junior at CCS. This is her 10th year at Cornerstone, and she has been in multiple shows. She was last seen in *Matilda* (Ensemble), *Little Women* (Ensemble), *Bye Bye Birdie* (Sweet Apple Girl), *Godspell* (ensemble), *Peter Pan* (Brave Girl #1), *Shrek the Musical Jr.* (Pippi Longstocking), and *Seussical the Musical Jr.* (Cat in the Hat). She is extremely excited to be in this production of *The Enchanted Bookshop*. She would like to thank Mrs. Smith for her amazing directorship as well as her parents for their constant support. She would also like to thank Audrey Ramos for being an amazing friend through any challenges and keeping her sane throughout the show.



RIVER SAUCEDA (Bombalurina) is a third-year student at CCS. She is currently a junior now performing in her third production with Cornerstone. Her debut was in a self-written skit at the end of her middle school years. River was last seen in *Matilda* (Little Kid) and *Bye Bye Birdie* (Sweet Apple Girl). A big thanks to her friends, family, Mrs Smith, and past directors for giving River an opportunity to shine at what she loves.



LAUREN QUINTANA (Mom) is a Senior at Cornerstone Christian Schools. This is her sixth high school theatre production. She was last seen in *High School Musical* (Cathy), *Peter and the Starcatcher* (Assistant Stage Manager), *Bye Bye Birdie* (Deborah Sue), *Matilda* (Mum/Big Kid/ Salsa Dancer), and the San Antonio Broadway Theatre Production of *The Lightning Thief: The Percy Jackson Musical* (Mrs. Dodds/DJ Cerberus/ Ensemble). She is looking forward to taking part in her last year of high school theatre and cannot wait to perform. Many thanks to her wonderful director, her family, and her friends for their support!



JOSIAH GARZA is a freshman at CCS. He was last seen in *The Lion, the Witch, and the Wardrobe* (Peter) and *Mary Poppins Jr.* (John Northbrook). He has also assisted backstage for several CCS productions. Josiah is excited to be performing in his first show with high school theatre. He wishes to thank his family, friends, director, and Jesus.

WHO'S WHO IN THE CAST



ISRAEL CHAPMAN (Robin Hood) is a Senior at CCS. This is his 6th year at Cornerstone, and he has been in multiple shows over the years. You might have seen him in *Little Women* (Laurie), *Matilda* (Children's entertainer), *Peter Pan* (Peter pan), *Shrek* (Donkey), *High School Musical* (Jack Scott), or *Bye Bye Birdie* (Quartet member). He is looking forward to taking part in this show and wants to thank God and all the people in his life for never giving up on him. Shoutout to my twin Mr. Garza.



MASON NOVOGRADAC (Tom Sawyer) is a Sophomore at CCS. This is his 5th year at Cornerstone, and he has been involved with many shows over the years. Mason has been in 8 CCS shows, some being *Matilda* (Nigel), *Mary Poppins* (Chimney Sweep and Clerk), *Peter Pan* (Lost Boy), *Music Man* (Ensemble). He is so grateful to be working with such talented and creative actors. Thanks go out to Mrs. Smith, Mr. Barnes, and my parents!



BRADY CAMPBELL (Sherlock) is a Senior at CCS. He has attended CCS for 8 years, and he has performed numerous shows in his time here including *Into the Woods Jr.* (Steward), *Shrek Jr.* (Ensemble), *Peter Pan Jr.* (Mr. Darling), *High School Musical* (Ensemble), *Bye Bye Birdie* (Mayor), *Little Women* (Mr. Lawrence), *Matilda* (Bruce), and now *The Enchanted Bookshop*. He is delighted, joyful, ecstatic, pleased, and satisfied with his role.



MIKAYLA LUJAN (Dorothy/Stage Manager) is a sophomore at CCS. She has been attending Cornerstone since she was in kindergarten. Throughout the years, she has been both on and off stage in *Mary Poppins Jr.* (Mary Poppins), *The Music Man* (Amaryllis), *Peter Pan Jr.* (Small Brave Girl), *Godspell Jr.* (Soloist), *High School Musical* (Spotlight Operator), *Peter and the Starcatcher* (Spotlight Operator), *Bye Bye Birdie* (Music Operator), *Little Women* (Ensemble), and *Matilda* (Nurse/ensemble). She is so blessed to be a part of this show and is grateful for making new memories! Special thanks to her parents and Mrs. Smith!



MEGAN ROHLMEIER (Heidi) Megan is a Sophomore, and this is her 5th year at CCS. Megan has been in multiple productions while attending Cornerstone Christian Schools, such as *Mary Poppins* (Statue/Ensemble), *Matilda* (Little Kid/Ensemble), and *The Enchanted Bookshop* (Heidi.) She thanks her parents and family for pushing her to embrace what she is gifted in, as well as her friends for always supporting her!



AUDREY RAMOS (Pollyanna) is a Junior at CCS. This is her 13th year at CCS, and she has been in multiple shows over the years. She has been seen in *Godspell Jr.* (Ensemble), *Bye Bye Birdie* (Sweet Apple Girl), *Little Women* (Ballroom Dancer/Hag), and *Matilda* (Little Kid). She has also worked as a crew head for *Peter and the Starcatcher*, *Mary Poppins Jr.*, *Bye Bye Birdie*, and *Matilda*. She is extremely excited to create new memories in this show! She would like to thank Mrs. Smith, her sisters, caffeine, Evie, and Evie's pantry for always being so supportive.

WHO'S WHO IN THE CAST



EMMALEE BARNES (Book Fairy/Head Stage Manager) Is a junior at CCS and has been attending Cornerstone for 11 years. She's been involved in several CCS shows, last seen in *Matilda* (Doctor), *Little Women* (Marmee), and *Bye Bye Birdie* (Penelope Ann). She has had so much fun with this production and with this cast and can't wait for the shows to come. She wants to thank Mrs. Smith, her mom, and her dad.



ANNALIESE NICHOLS (Lady in Red) is a junior at CCS. She has done many shows throughout her life, including *Sound of Music*, *Shrek the Musical*, *Once Upon a Mattress*, and more. Her favorite role she has ever played was the Jester in *Once Upon a Mattress*. She wants to thank her family for always supporting her in her passion for theater. She hopes you enjoy the show while you laugh, cry, and enjoy the heartwarming and sassy moments.



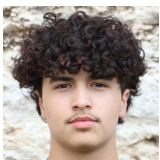
AARON ARMSTRONG (Fagin/Frankenstein) Aaron is a Sophomore at CCS. This is his 5th year at CCS and has been a part of four productions. Aaron was last seen in *Matilda* (Sergei/Big Kid), *Mary Poppins Jr.* (Chairman/Ensemble), *Godspell Jr.* (Ensemble), and *Peter Pan Jr.* (Starkey). Aaron is super duper excited to be a part of his first fall production and make even more memories with his friends that are "awesome sauce" according to him. Aaron would like to give thanks to God, for giving him the passion for the arts, and caffeine for getting him through tech.



RAEGAN DADFAR (Long John Silver) A sophomore at CCS. This is her 7th year at Cornerstone Christian Schools, and her 3rd show. The first show she was in was *Mary Poppins Jr.* (Ms. Smythe/Ensemble), and her second was *Matilda* (Ensemble). She gives great thanks to Ms. Pearce, her former director.

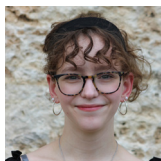


EMMANUEL SANCHEZ (Officer Ketchum) This is his tenth year at CCS, and he has been part of multiple shows. His past productions include *Godspell Jr.* (John the Baptist), *Mary Poppins Jr.* (Assistant Stage Manager), and *Peter Pan Jr.* (Lost Boy Ensemble) and most recently *Matilda* (Eric). He is super-duper excited to be part of this production and loves working behind the scenes to help bring the show to life. He would like to give thanks to the amazing Mrs. Smith for her guidance and support. Special thanks to my amazing parents and their relentless support. Love you, mom and dad.



ANDREW PUENTE (Fingers) Andrew is a Senior at CCS and has been a Cornerstone student for 14 years. He has been in multiple shows such as *Peter Pan* (twin #1), *Little Women* (Braxton Prendergast), *Bye Bye Birdie* (Lee), and *Matilda* (Cook). Andrew is happy to be a part of another show and is always happy to be a part of CCS productions.

WHO'S WHO IN THE CAST



JORDAN JAPHET (Eddie) is a Senior at CCS and Co-Crewhead. This is her 5th year at Cornerstone, and she has worked on multiple shows over the past years. She has been in *High School Musical* (Crew), *Peter and the Starcatcher* (Crewhead), *Bye Bye Birdie* (Crewhead), *Little Women* (Crewhead), and *Matilda* (Big Kid/Co-Crewhead). Although she will miss the spreadsheets, Jordan is very excited to finally be yapping to an audience, and not just to the crew! She is thankful to Mrs. Smith for giving her the opportunity to be a silly goose on stage with her friends.



NOAH PADILLA (Doctor Dolittle) is a Senior at CCS. This is his 4th high school production. He was last seen in *Matilda* (Salsa Dancer/Dad/Little Kid), *Little Women* (Rodrigo) and *Bye Bye Birdie* (Quartet). He is looking forward to continuing his high school acting career with the Warrior Theatre Company. Many thanks to God, his family, his friends, and Mrs. Smith!



NINA MERRETT (Queen of Hearts) is a Sophomore at CCS. This is her 3rd year at Cornerstone Christian Schools. She has been in a few shows these past couple of years. She was last seen in *Matilda* (Ensemble), *Wizard of Oz* (Tech), *ELF Jr.* (Tech), and her first show, *Frozen Jr.* (Ensemble). She is grateful to be a part of such a welcoming community! Many thanks to Mrs. Smith!



ARIANNA SMITH is a sophomore at CCS, and this is her 4th year at Cornerstone Christian Schools. She has been in many shows over the years including *Mary Poppins* (ensemble) and *Matilda* (ensemble). She also helped out with the middle school production of *The Lion, The Witch, and The Wardrobe* (Hair and Makeup Crew Head). Thanks go out to Mr. Barnes and Mrs. Smith for the amazing production!



MARYN VILLARREAL (Hopalong Cassidy) is a junior at CCS and this is her 3rd year at Cornerstone. She was last seen in *Matilda* (Young kid). She has also been seen in *Little Women* (Ensemble), *Bye Bye Birdie* (Sweet Apple Girl), *Mamma Mia* (Ensemble), *Frozen* (Ensemble), and *Shrek* (Snow White). She is excited to take part in *The Enchanted Bookshop* and many more over the next years. Many thanks to her parents and Mrs. Smith!



ARANZA CARBONELL (Stage Manager/Swing) is a Sophomore at CCS. This is her 7th year at Cornerstone, and she has been in multiple shows over the years. She was last seen in *Mary Poppins Jr.* (Winifred Banks), *The Lion King Kids* (Rafiki #5), *The Music Man* (Townpeople/Ensemble), *Matilda* (Big Kid), and *Peter Pan Jr.* (Brave Girl Ensemble). She feels so thankful and blessed to be part of this show. Many thanks to Mrs. Smith, Ms. Pearce, Mr. Barnes, and her family and friends. And most importantly thanks to God. Her performance will always be for Him and His glory, because He deserves the glory.

WHO'S WHO IN THE CAST



MARISSA MINNECI (Stage Manager/Swing) is a Sophomore at CCS. This is her third year at Cornerstone, and she has been in two shows. She was last seen in *Matilda* (Scary Kid) and *Mary Poppins* (ensemble). She is very excited about *The Enchanted Bookshop* and wants to thank her parents for all they've done for her, and Mrs. Smith for helping her grow these past few years.



LILLIAN GARCIA (Stage Manager/Swing) has been going to CCS for three years, and her past roles have been *Newsies* (ensemble), *Matilda* (Matilda), *Seussical* (Jojo), and *Mary Poppins* (ensemble). Thank you to Mrs. Smith for putting this show together!



ETHAN MALDONADO (Stage Crew/Swing) is a Junior at Cornerstone and has been attending for the past 12 years. He was last seen in *Matilda* (The Escapologist). Other shows that he has been involved in are *Little Women* (John Brooke), *Bye Bye Birdie* (Hugo Peabody), *Godspell* (Jesus), *Peter Pan* (John Darling), *Music Man* (Ensemble), *Shrek* (Knight), *Seussical* (Wickersham Monkey), and *Charlie Brown* (Charlie Brown). Ethan would like to shout out to his Mom and Dad for always being supportive of every decision that he has made in his life. Ethan is very excited for the year and is looking forward to acting in more projects and spending time with his friends.

DIRECTORS



TANISHA SMITH (Director) is excited to be directing her first high school show at CCS. She is also our middle school theatre teacher/director. Mrs. Smith graduated in 2013 from the University of Mobile in Alabama with a degree in Music Education and Theatre. She has taught music and theatre for 8 years, and directed many shows in schools and local community theatre. She is dedicated to teaching and guiding students as they grow in their God-given talents and passion for the fine arts. She prays they learn to use these gifts for the glory of God.



BRYAN CAMPBELL (Assistant Director) is a recent graduate of Abilene Christian University, and has served as Assistant Director for The Enchanted Bookshop. He graduated with a degree in Business Management and a minor in multimedia. Bryan is San Antonio born and raised and is pleased to be working with Mrs. Smith again after all these years. In high school, he served for four years as a stage manager in productions such as High School Musical and Beauty and the Beast, and he served on the production team for ACU's Sing Song in college while working as a stage manager at a local community theater over the summers. Bryan has been working in production for the past ten years and is glad to be continuing his journey in production with this amazing department!

NOTES FROM THE DIRECTOR

Hello and Welcome!

I'm thrilled you have joined us for our performance of Todd Wallinger's "The Enchanted Bookshop." At first glance this play just looks like a fun, quirky story about books, but if you pay attention, you may just see it's about way more than that! It actually reminds me of how Jesus used to teach. Think about it: Jesus didn't just give boring lectures; He told relatable stories, to help explain the complex truths of faith. Similarly, Wallinger uses the setting of a magical bookshop to tell us a story about courage, love, and what really matters. Our characters must figure out how to protect this special place, which could be seen as a metaphor for your own heart or soul. Just as scripture urges us in Proverbs 4 and Philippians 4 to guard our hearts and minds from darkness or ignorance, our heroes must safeguard the bookshop from the forces trying to diminish it's light.

That vital work of protection and restoration is never done alone, and that's where the beautiful themes of **friendship and sacrificial love** come in. You'll see throughout the play that no single character has all the answers; they have to rely on each other, which perfectly reflects how the Bible talks about teamwork and fellowship. Crucially, the climax of the play showcases one of the deepest acts of human love: the **willingness to sacrifice** one's own comfort, safety, or desires for the well-being of a friend and the protection of what is good. This selfless action—this readiness to endure a personal cost to ensure the survival of the bookshop and the joy of their friend—is a profound echo of the ultimate sacrifice celebrated in Christian faith. It's in these moments of vulnerability and mutual support, underscored by **laughter** and shared history, that the characters truly triumph. Ultimately, "The Enchanted Bookshop" is a heartfelt reminder that our lives, like that magical shop, are precious spaces meant to be filled with light, wisdom, joy, and the extraordinary, sometimes sacrificial, love of good friends. I hope you enjoy every magical moment!

Sincerely,
Mrs. Tanisha Smith

SPECIAL THANKS

Cornerstone Church Audio, Special Events, Transportation,
Marketing & Production Departments
Amber Japhet, Parent Liaison
Justin Armstrong, Set Construction
Lora Carroccio, Costume Assistance
Elizabeth James, Set Painting
Theater Parents
CCS Administration